

Buffalo Rubbing Stone School Planning Survey 2025 - 25 respondents

We share SDP information and updates in different ways. Please indicate the ways you have learned about our SDP. Check all that apply.

Answer Option	Count	Percentage
School website	10	40%
School council meeting	7	28%
SchoolMessenger - principal and teacher emails	19	76%
Other (please specify)	0	0%
Total	36	

The SDP is developed with all students in mind. Please select your level of agreement with the following statements:

Answer Option	Strongly Agree	Agree	Disagree	Strongly Disagree	Total
My child's learning can benefit from the goal(s), outcome(s), actions and resources in the SDP.	48% 12	52% 13	0% 0	0% 0	25
The learning of all students is reflected and prioritized in the goal(s), outcome(s), actions and resources in the SDP.	32% 8	68% 17	0% 0	0% 0	25

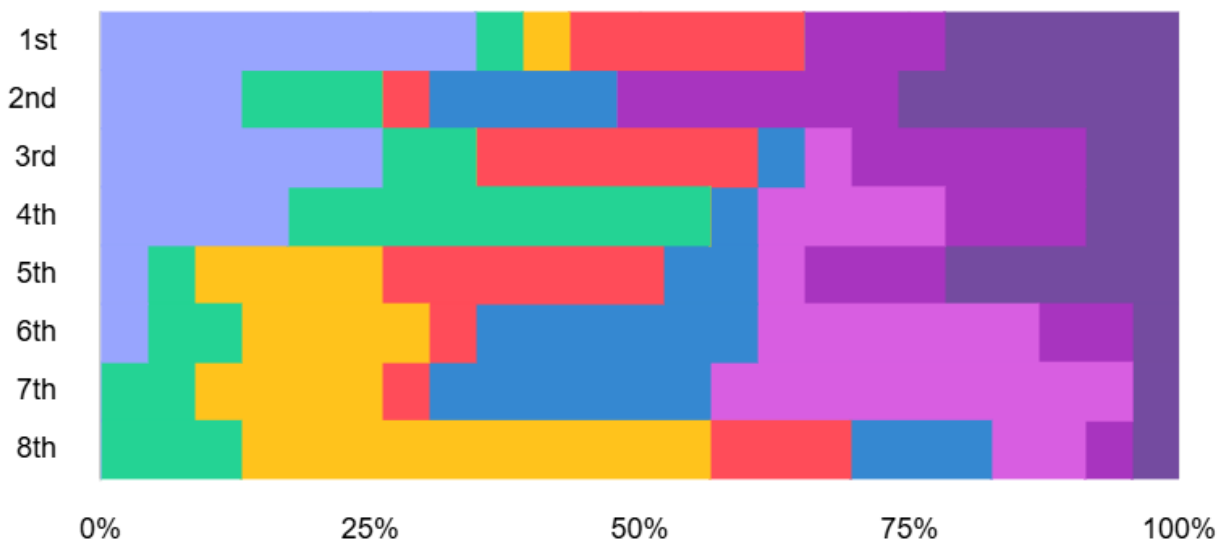
Please share any other thoughts you have about our SDP.

Providing Mental Health & Counseling Services to kids.

The SDP focuses on how to improve the weaker areas and concentrate on important subject topics in academics, character building, and overall well being of the students. This is great along with quant and

qualitative improvement. However, it strives to improve on the areas of weakness. It would be beneficial to recognize students who excel and provide an area of focus on them too as it's not only the areas of weakness that can be nurtured. Students who pull up the scores with consistent 4s should be challenged with stretch learning.

Schools must operate within their budget and too many fees can be unmanageable for families. Knowing that, please rank the following activities and services in order of importance to you.



Field Trips, Inline Skating, Swimming, and Curricular Enhancements were that categories selected most frequently as first or second choice.

Please select your level of agreement with the following statements:

Answer Option	Strongly Agree	Agree	Disagree	Strongly Disagree	Total
The activities our school provides (e.g., field trips, guest speakers, sporting activities, etc.) are important for my child's learning.	69.57% 16	30.43% 7	0% 0	0% 0	23
The school fees I pay are reasonable considering the benefit they provide my child.	47.83% 11	52.17% 12	0% 0	0% 0	23

Please share any other thoughts you have about our school budget and fees.

Does it have impact on academic learning outcomes and support SDP areas or is it allocated to "nice to haves" that are not integral to core Math and LA learning outcomes that are the focus of academic SDPs?

As a parent, I would happily pay additional fees for field trips and other enrichment activities above what I typically see in a school year now.